

**For Sale**

# Golf Course Development Site

159th St & McCloud | Andover, KS

## PROPERTY INFORMATION

Lot Size

7.86 Acres or  
342,505 Sq. Ft.

Zoning

Residential

.....  
**PURCHASE PRICE**

**\$2.50/SF**

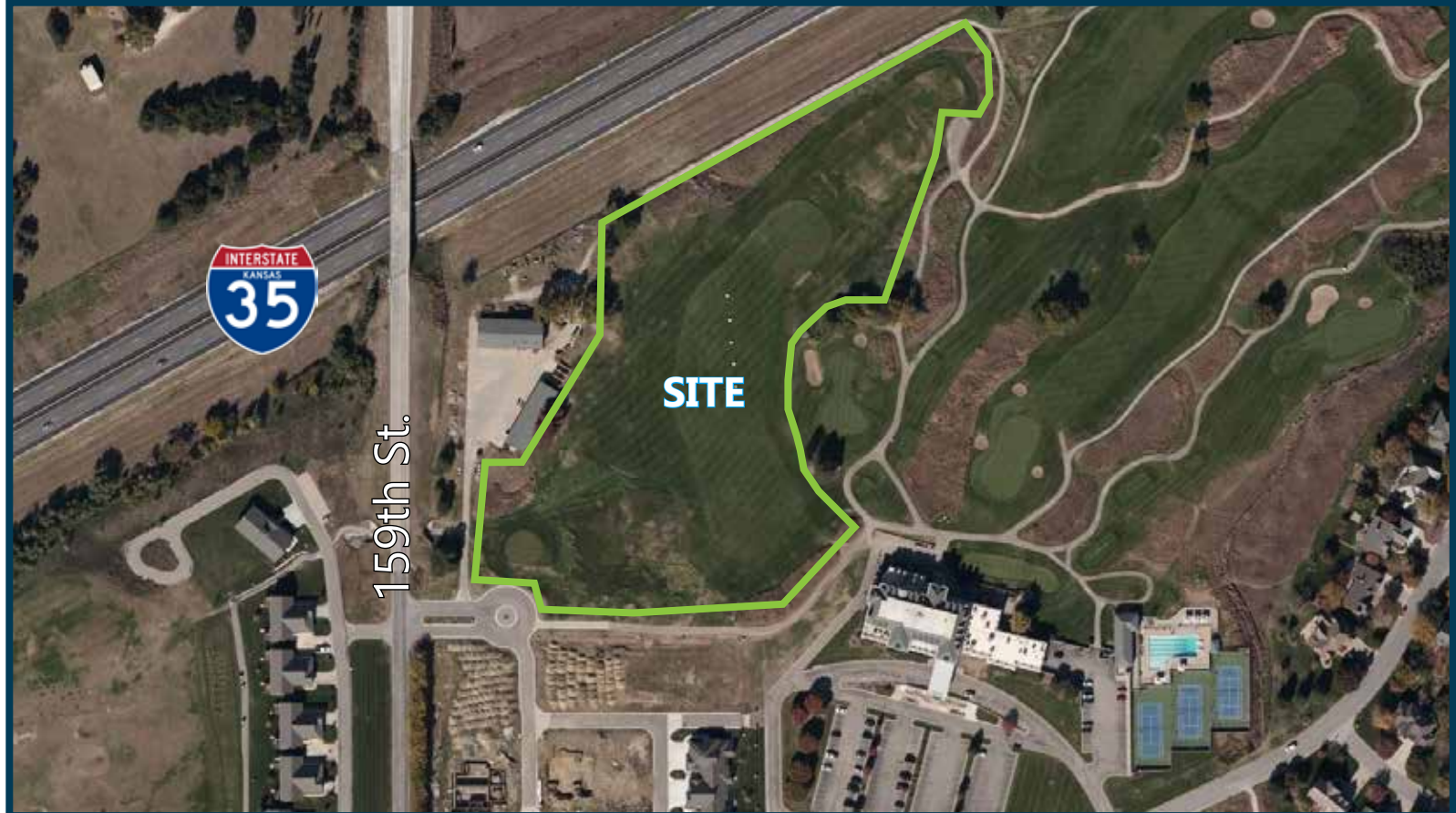
## CONTACT INFORMATION

**Jake Ramstack**

(316) 618-1100  
jake@insitere.com

**Dan Unruh, CCIM**

(316) 618-1100  
danunruh@insitere.com



- ✓ Located on Terradyne Golf Course
- ✓ Zoned Residential
- ✓ Last golf Course Frontage Available

Like/Follow us!  
   **InSite**  
REAL • ESTATE • GROUP

**For Sale**

# Golf Course Development Site

159th St & McCloud | Andover, KS

## PROPERTY INFORMATION

Lot Size

7.86 Acres or  
342,505 Sq. Ft.

Zoning

Residential

.....

## PURCHASE PRICE

**\$2.50/SF**



## CONTACT INFORMATION

**Jake Ramstack**

(316) 618-1100  
jake@insitere.com

**Dan Unruh, CCIM**

(316) 618-1100  
danunruh@insitere.com

### AREA NEIGHBORS

- |                         |                               |
|-------------------------|-------------------------------|
| Terradyne Country Club  | Andover Central High School   |
| Rogue Personal Training | Butler Community College      |
| Walgreens               | Brookhaven Baptist Church     |
| Kutter Pet Care Center  | Andover Central Middle School |
| MJC Architecture        | Watercrest Communities        |
| Andover Antique Mall    | Dollar General                |
| ATG Sports Industries   | Vornado Air                   |

Like/Follow us!  
 **InSite**  
REAL • ESTATE • GROUP